

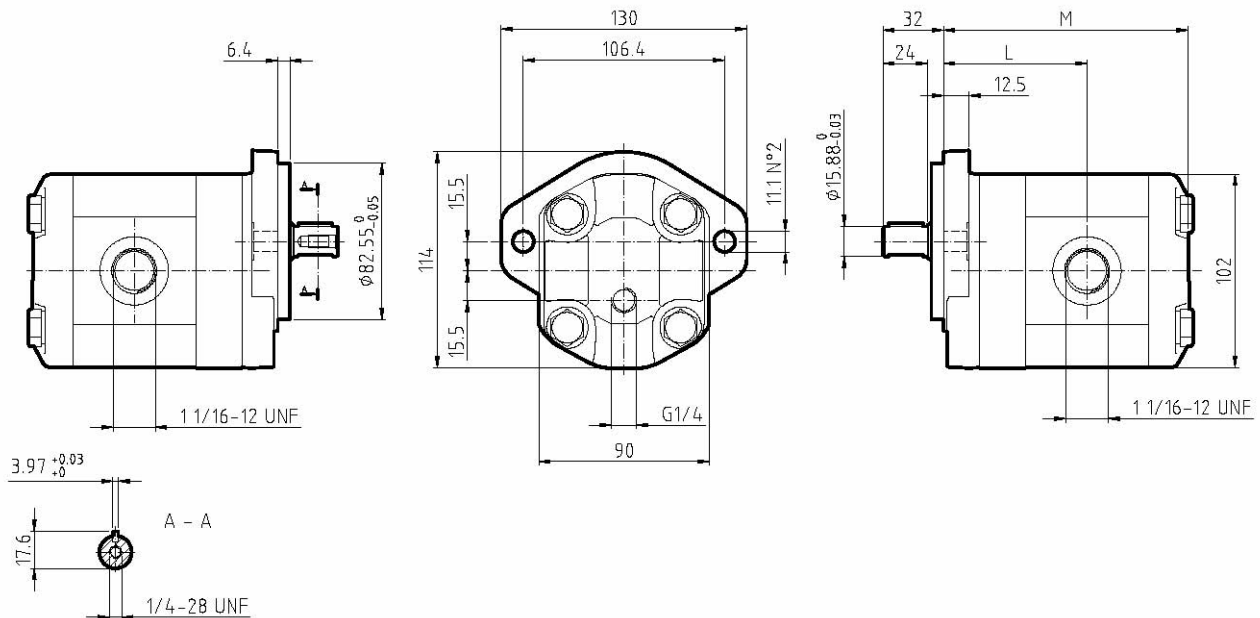
# GHM2A – T

Parti accessorie a corredo della pompa standard:  
 linguetta (codice 522067).  
 Monta flangia 82-2 (A) secondo norma  
 SAE J 744c.  
 Le porte standard sono lavorate secondo la  
 specifica SAE J 1926/1 (ISO 11926-1) relativa a  
 porte filettate con tenuta O-ring.  
 Filetto 1/4 -28 UNF profondità utile 16 mm.  
 Drenaggio G1/4 profondità utile 12 mm.

Flangia in ghisa – coperchio in ghisa

Accessories supplied with the standard pump:  
 key (code 522067).  
 Mounting flange 82-2 (A) in compliance with  
 SAE J 744c.  
 Standard ports are machined in compliance with  
 threaded port with O-ring seal in truncated housing  
 SAE J 1926/1 (ISO 11926-1).  
 1/4-28 UNF thread depth 16 mm.  
 G1/4 drain port thread depth 12 mm.

Cast iron flange – cast iron cover



| TIPO<br>TYPE    | CILINDRATA<br>DISPLACEMENT                   | PORTATA<br>a 1500 giri/min<br>FLOW<br>at 1500 rev/min | PRESSIONI MASSIME<br>MAX PRESSURE |                |                | VELOCITA' MASSIMA<br>MAX SPEED | DIMENSIONI<br>DIMENSIONS |       |
|-----------------|--|---|-----------------------------------|----------------|----------------|--------------------------------|--------------------------|-------|
|                 |  |   | P <sub>I</sub>                    | P <sub>C</sub> | P <sub>P</sub> |                                | L                        | M     |
|                 | cm <sup>3</sup> /giro [cm <sup>3</sup> /rev] | litri/min [litres/min]                                | bar                               | bar            | bar            | giri/min [rpm]                 | mm                       | mm    |
| GHM2A-R-6-E1-T  | 4,5  | 6,4   | 280                               | 270            | 295            | 4000                           | 69,9                     | 116,4 |
| GHM2A-R-9-E1-T  | 6,4  | 9,1   | 280                               | 270            | 295            | 4000                           | 71,4                     | 119,4 |
| GHM2A-R-10-E1-T | 7,0  | 10,0  | 280                               | 270            | 295            | 4000                           | 71,9                     | 120,4 |
| GHM2A-R-12-E1-T | 8,3  | 11,8  | 280                               | 270            | 295            | 4000                           | 72,9                     | 122,4 |
| GHM2A-R-13-E1-T | 9,6  | 13,7  | 280                               | 270            | 295            | 4000                           | 73,9                     | 124,4 |
| GHM2A-R-16-E1-T | 11,5   | 16,4  | 280                               | 270            | 295            | 4000                           | 75,4                     | 127,4 |
| GHM2A-R-20-E1-T | 14,1   | 20,1  | 260                               | 250            | 275            | 3200                           | 77,4                     | 131,4 |
| GHM2A-R-22-E1-T | 16,0   | 22,8  | 260                               | 250            | 275            | 2800                           | 78,9                     | 134,4 |
| GHM2A-R-25-E1-T | 17,9   | 25,5  | 260                               | 250            | 275            | 2500                           | 80,4                     | 137,4 |
| GHM2A-R-30-E1-T | 21,1   | 30,1  | 230                               | 220            | 245            | 2200                           | 82,9                     | 142,4 |
| GHM2A-R-34-E1-T | 23,7   | 33,7  | 180                               | 170            | 195            | 2000                           | 84,9                     | 146,4 |
| GHM2A-R-37-E1-T | 25,5   | 36,4  | 170                               | 160            | 185            | 1800                           | 86,4                     | 149,4 |
| GHM2A-R-40-E1-T | 28,2   | 40,1  | 160                               | 150            | 175            | 1800                           | 88,4                     | 153,4 |